

# K-T1 Thrust Meter

## SPECIFICATIONS

Operating Temperature : -20°C-50°C  
 Weight : 21g (without cables)  
 Dimension : 33x 69x 11mm  
 Operating Voltage : 5.5V-24V ,2S/3S suggested



The first electronic applies for calculating the thrust in the hobby model field. The brushless motor with load even can display thrust data. It's widely used, easy-to-connect, and no effect for power system working.

## PRODUCT APPLICATION

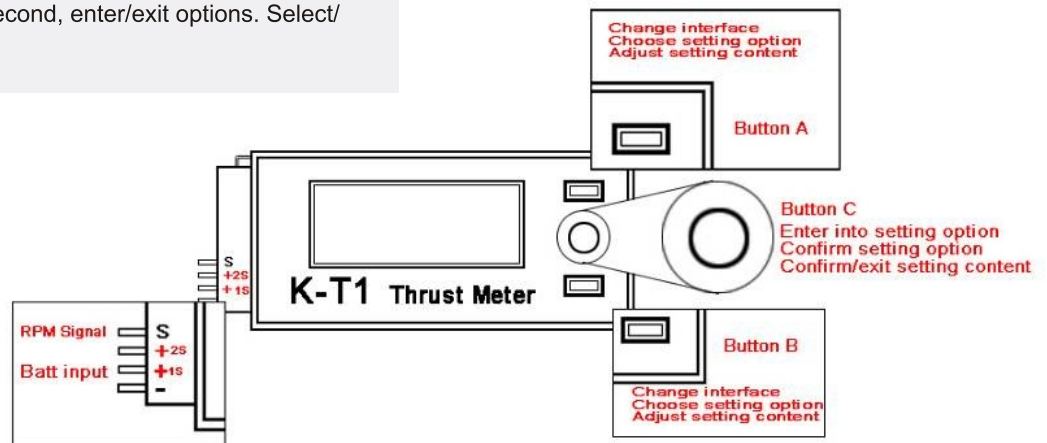
AEO K-T1 is a thrust meter used to measure the thrust of the power systems, we can easily know if the thrust can be up to the standard of the models. It is also a voltage meter and tachometer:

1. Measure the thrust of the power system. ( Propeller required )
2. Measure the voltage of the power supply.
3. Measure the RPM of the motor.

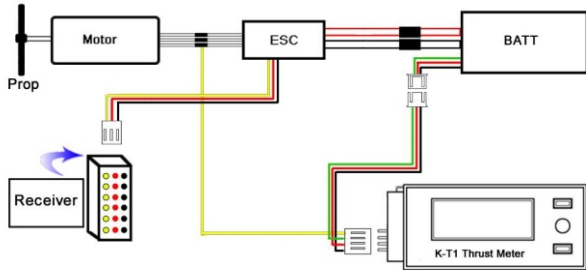
# Function & Usage

## 1.PORTS & PRESS-BUTTON

Plug : Designated cables, used for the power-supply to the recorder, signal sampling.  
 Without designated cables, power supplied directly, please connect to ports “-” & “2S” .  
 Button A / Button B: Toggle Interface、 options adjusting.  
 Button C: Keep pressing for 2 second, enter/exit options. Select/affirm save and exit setup.



## 2.CONNECTIONS



## 3.INTERFACE INTRODUCE

### 3.1 Conventional interface

V:Voltage of batteries  
 RPM:RPM of the motors  
 Grm:The thrust(g) produced by the power system  
 S1:Voltage of the first cell of the battery pack  
 S2:Voltage of the second cell of the battery pack  
 Total:Voltage of the battery pack

<b>V : 00.00</b>	<b>S1 : 00.00</b>
<b>RPM : 0000000</b>	<b>S2 : 00.00</b>
<b>grm : 0000000</b>	<b>Total : 00.00</b>

### 3.2 Interface of settings

6\*5 GWS RS:Setting the types of propellers (GWS,APC)  
 Pole:Setting the pairs of the magnets in the motor(e.g.:set "006" pole if there are 12pcs of magnets in the motor)  
 1S VOT/2S VOT :Voltage calibration of Cell 1 & Cell 2 (Eminently accurate AVO meter suggested). h  
 LOAD DEFAULT:Restore default .

<b>6*5 GWS RS</b>
<b>Pole : 006</b>
<b>1S VOT : 03700</b>
<b>2S VOT : 03700</b>
<b>LOAD DEFAULT</b>

## 4.USAGE

- 4.1 Correct connection, including the propellers.
- 4.2 Correct setting values: type of the propeller, pairs of magnets.
- 4.3 The datas in the conventional interface displayed as soon as turn on RX&TX, and instantaneous transmission of the thrust produced by the power system .

## 5.ATTENTIONS

- 5.1 Service voltage: The design of the connection is special for 2S lipos, thus there will be no display interface for Cell 3rd.
- 5.2 Due to the features of LCD panel, the refresh rate drops to attribute normal phenomenon in low temperature.
- 5.3 Although it's ultra-low power consumption, please interrupt the power supply, in order to avoid over discharge.
- 5.4 This product is special for brushless motors.
- 5.5 There may be some error for a very few micro motors with very low magnetism magnets.
- 5.6 There may be some error of the thrust datas because of the difference of propellers and the air density etc.

## 6.SOMETHING ELSE

Our growth needs your support.  
 We are looking forward to receiving more thrust arguments of different brand propellers on=www.aeorc.com or email us to service@aeorc.cn, there will be nice gifts for you after corroboration. Thank you !